

*SMOKY VALLEY
HIGH SCHOOL*



*VIKING ORCHESTRA
HANDBOOK*

ORCHESTRA GUIDELINES

The Smoky Valley High School Viking Orchestra is a well-known and respected musical performance group dedicated to the improvement of its players. The success of the group depends on each player's attitude, preparation, and performance. The information included in this handbook is provided for parents, guardians, and students to help ensure the success of each student.

Goals

1. To provide the opportunities necessary for participating students to become lifelong, creative, and persistent problem solvers in musical and nonmusical endeavors through musical performance.
2. To provide the opportunities necessary for participating students to become music performers, future music educators, and consumers of music.

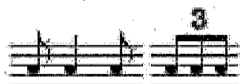
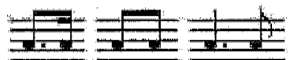
Objectives

1. Students will participate in ongoing development of performance techniques.
2. Students will participate in ongoing development of musicianship.
3. Students will participate in performance settings including string orchestra, full orchestra, and chamber ensembles. Students will be given the opportunity to give solo performances.
4. Students will gain experience performing in a broad range of musical styles.

Specific Course Activities

1. Student grades will include performance activities evaluated individually by the director.
2. Students will be ready for daily rehearsals with an instrument in good working condition, all accessories needed for full participation in class, a rehearsal/performance folder kept in good condition and fully stocked.
3. Students will participate in daily rehearsals.
4. Students will participate in out-of-class rehearsals and performances as assigned.
5. Students will prepare performance repertoire and turn in written assignments and tests.
6. Students will handle and return all music, folders, and uniforms as assigned.
7. Ongoing musicianship development will include presentation of basic concepts, availability of review materials, written evaluation, and performance evaluation in the following areas:

- Grade IV Orchestra Literature
- Keys: Concert D, G, F, C Major / d, a, e, g minor
- Meter: 2/4, 3/4, 4/4, 6/8, Cut-time
- Rhythm:



- Shifting through 5th Position
- Thumb Position for Cello/Bass
- Vibrato
- Spicatto
- Detache
- Marcatto

ATTENDANCE:

An orchestra cannot perform at its best with members missing. Therefore, **students are required to participate in all rehearsals and performances unless excused by the director in advance.**

An unexcused absence will translate into zero points earned for the rehearsal or performance missed. Never assume an absence will be excused. Parents and students must communicate in writing with the director at least 7 days in advance for a non-emergency excused absence. A complete list of excused and unexcused absences would be impossible to include in this handbook. The following lists are *examples* of excused and unexcused absences.

Excused Absences

1. Illness
2. Death in the family
3. Family emergency
4. Religious conflict

Unexcused Absences

1. Homework
2. Transportation problems
3. Working at a job
4. Baby sitting
5. Birthday celebrations and other parties
6. Oversleeping
7. Forgetting instrument and/or music

A calendar of performance dates will be sent home as well as posted on the orchestra web site. Any additional performances or rehearsals will be announced in writing as far in advance as possible. **It is the responsibility of the student to take notes regarding performances and rehearsals home to parents.**

EQUIPMENT NEEDED:

1. Pencil.
2. Folder for Music (provided)
3. A music stand (Hamilton Model 600)
4. Instrument with Horsehair bow
5. Tuner (Korg model CA-30)
6. Rosin, Mute, Shoulder Rests, and Endpin Holders as needed
7. Concert Attire (see Concert Attire Section of this Handbook)

A metronome is important to have, but is not required.

CONCERT ATTIRE:

Young Men

1. Black Dress Trousers
2. White Dress Shirt
3. Black dress socks and shoes
4. Black suit coat
5. Black bow tie

Young Women

1. Black Dress or Blouse with Skirt
2. Dress/skirt should be full length
3. Shoulders and Midriff should be covered
4. Black Shoes/not sandals or flip-flops

GRADING:

Report card grades in orchestra are equal in weight to any other class (they count toward class ranking, honor society, eligibility, etc.) but the primary goal of orchestra is for each student to reach their highest achievement as a musician. **Grades are not based on attendance.** Grades will be earned according to the system outlined here:

Item	Percentage
Daily Rehearsals	34%
Performance Exams/Written Assignments	33%
Performances	33%

Daily Rehearsals:

Daily rehearsal points will be earned according to the following criteria:

All students will begin the semester with 100/100 rehearsal points. Points can/will be deducted as follows:

Item	Points
Absence from rehearsal	-1 Point
Missing instrument	-1 Point
Missing materials (music, etc.)	-1 Point
Repeatedly/Severely Off-Task	-1 Point

Lost points may be made up, but **it is the responsibility of the student to seek out and complete make-up work.**

Additional points may be lost if a student demonstrates poor rehearsal skills such as:

1. Talking while tuning
2. Talking while others rehearse
3. Playing while others rehearse
4. Being unprepared to play when asked
5. Failing to bring all necessary equipment to rehearsal

Performance Exams:

Performance exams will be taken from various technique and repertoire books and concert repertoire. Students desiring an "A" will demonstrate the following:

1. Proper posture
2. Good tone
3. Good intonation
4. Correct bowings
5. Correct notes
6. Correct articulation

Written Assignments:

Written work may be assigned from time to time. Points for these assignments will be determined by the length and difficulty of the assignment.

Performances:

Performances simply cannot be re-created. Therefore, it is impossible to “make-up” missed performances. **Parents and students must communicate in writing with the director at least 7 days in advance for a non-emergency excused absence.** Students excused from a concert will be required to complete an alternative assignment to earn credit for the performance missed.

Bonus Points/Make-up Assignments:

Bonus points can be earned by going above and beyond class requirements. Many of these opportunities can be used as Make-Up assignments as well.

Item	Points
Outside Practice beyond daily requirement (Practice report signed by parents)	1 point per hour
Private Lessons	1 points per hour
Approved Concert Attendance	1 point each
Participation in Outside Musical Activity	Determined by Activity

HOME PRACTICE:

Playing a musical instrument is a developed skill; therefore, **students will be expected to practice daily at their** home. Instrument lockers are checked daily for the director’s record. If a student has only one instrument and it is left at school, it is assumed there was no home practice.

ELIGIBILITY:

The student must pass all of his/her classes; two failing course grades in any given week makes the student ineligible to participate in extra-curricular activities!

Extra-curricular activities include:

- | | | |
|-----------------------------|---------------------------|-------------------------|
| 1. KMEA Orchestra Auditions | 2. District Orchestra | 3. KMEA State Orchestra |
| 4. Solo/Ensemble Contest | 5. Large Ensemble Contest | 6. Festivals |

Curricular activities include:

1. Concerts held at Lindsborg Middle School
2. Concerts held at other schools

Rehearsals and concerts are part of the regular, graded, course work.

Students who are constantly ineligible, absent, perform poorly or are disruptive will be removed from the orchestra.

LETTERING:

A student may letter in Orchestra by participating in all required activities of the course as well as activities above and beyond the requirements for the course. Those activities include but are not limited to: Regional and State Solo and Ensemble Contests, Youth Symphony, Community Events, and Church Functions. An unexcused absence from any required performance disqualifies a student from lettering in Orchestra.

CONTACT INFORMATION:

Mr. Littich may be reached through e-mail at hlittich@smokyvalley.org or by calling 227-2909 X 350.